

Issue 28

In this issue, the front section of the exhaust pipe is provided. Before attaching it to the floor panel, prepare it by fitting several parts.



Prepare the exhaust pipe for installation

※ In this guide "Left" or "(L)", and "Right" or "(R)", refer to the direction as viewed from the driver's seat.



28-A Front Exhaust Pipe (1)

28-B Front Insulator

28-C Front Exhaust Pipe (2)

28-D Exhaust Pipe Bracket

28-E Piping Holder (1)

28-F Piping Holder (2) ×3

AP Screw (1.7×4mm) ×1+ Spare

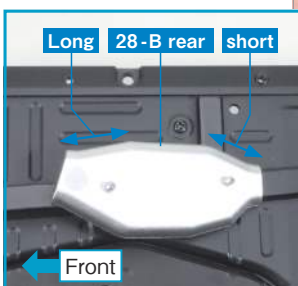
View the follow-along video



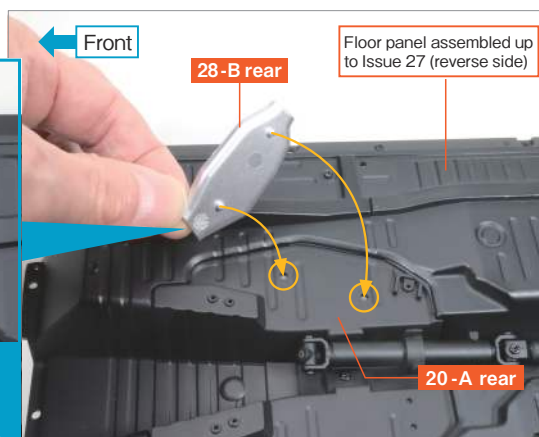
※ Due to the model's design, the shapes of some parts may differ from those of the real vehicle.

step 1 Add parts to the reverse side of the floor panel

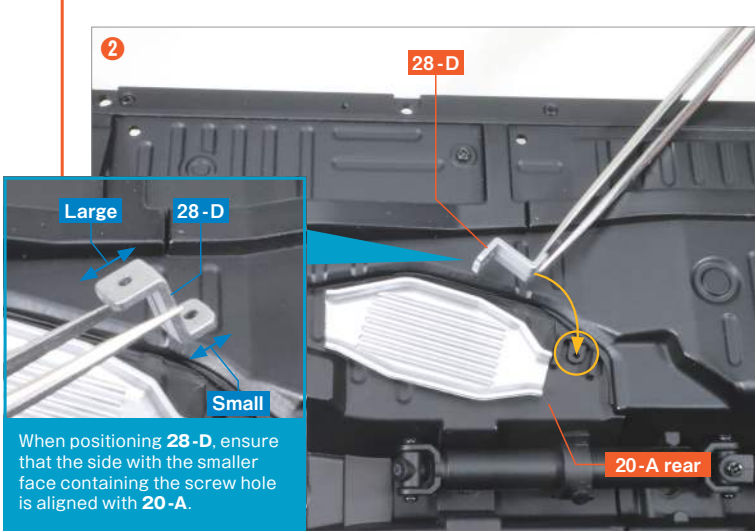
1



There are protrusions on the reverse side of **28-B**. Ensure that the side with the longer distance from the edge of the part to the protrusion is facing towards the front.

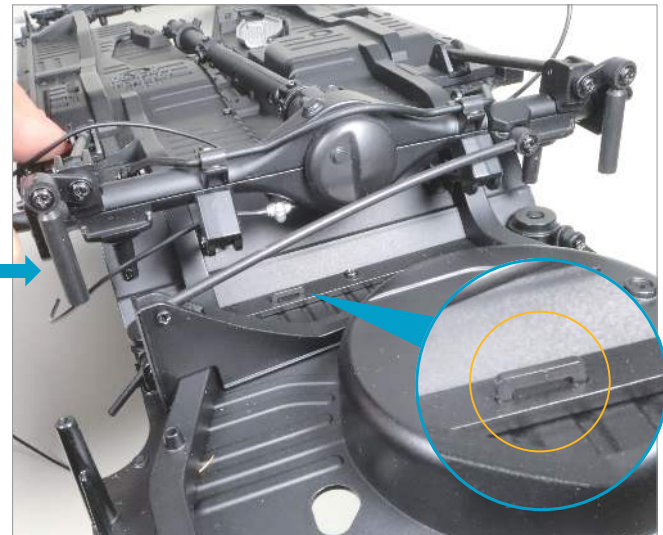
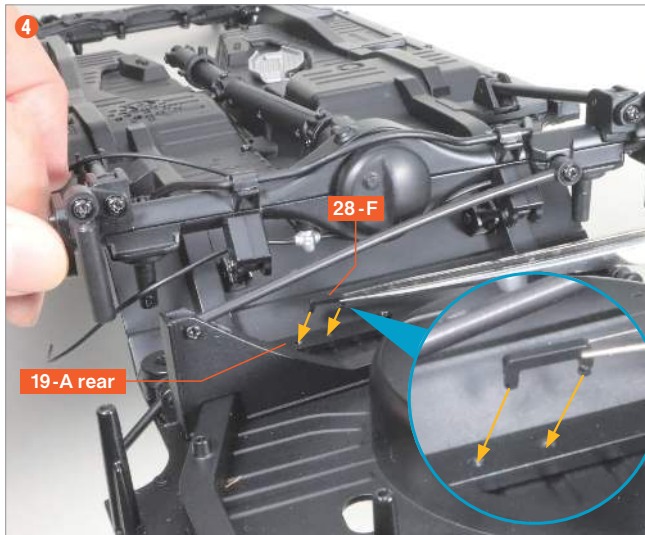


Fit the two protrusions on the reverse side of the front insulator **28-B** into the two holes on the reverse side of the centre cover **20-A**.

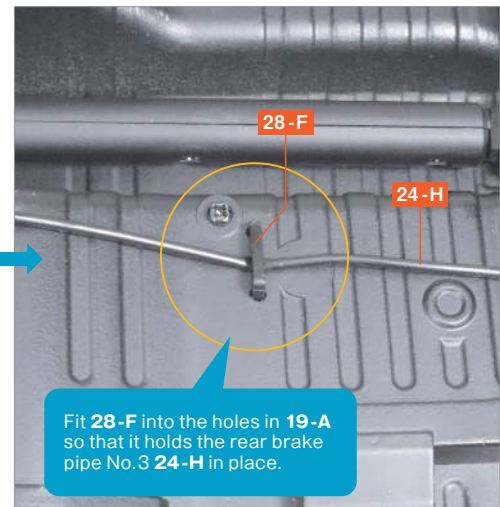
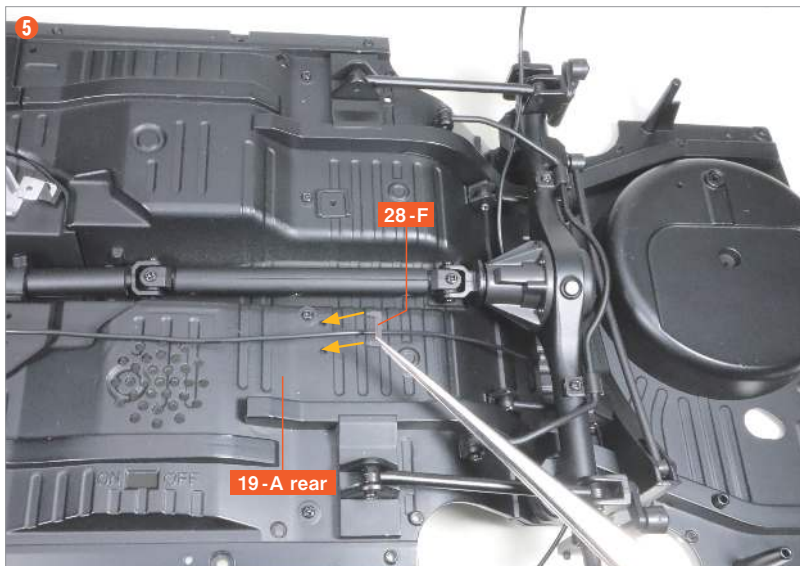


Align the screw hole of the exhaust pipe bracket **28-D** with the screw hole on the reverse side of **20-A** and the U-shaped protrusion.

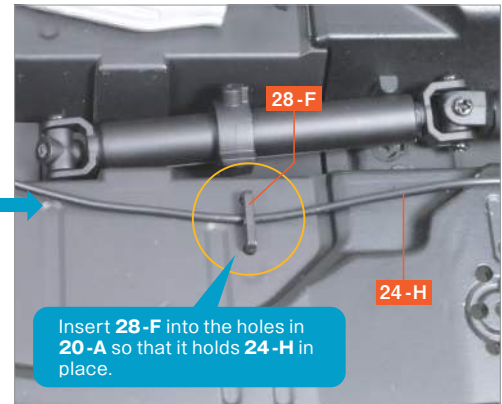
Secure it with an **AP screw**.



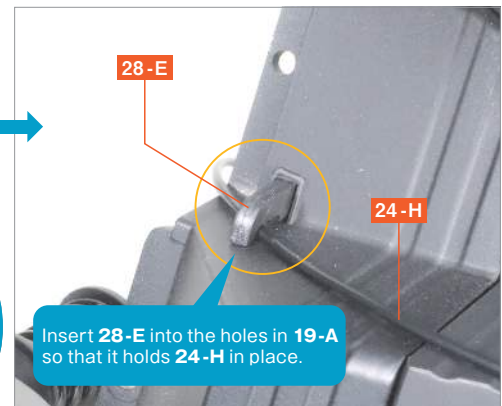
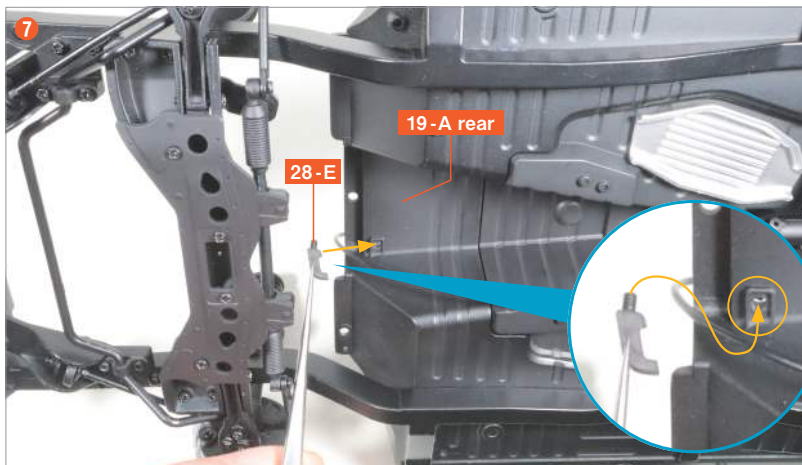
Insert both ends of the first piping holder (2) **28-F** into the two holes on the reverse side of the floor pan **19-A**.



Insert both ends of the second **28-F** into the two holes on the reverse side of **19-A**.



Insert both ends of the third **28-F** into the two holes on the reverse side of **20-A**.



Insert the protrusions of piping holder (1) **28-E** into the holes on the reverse side of **19-A**.

Complete

The assembly for Issue 28 is complete.

The front exhaust pipe (1) **28-A** and front exhaust pipe (2) **28-C** will be attached to the floor panel in Issue 29, together with the rear exhaust pipe and muffler.

Please keep them in a safe place until then to avoid losing them.

